

McKean County COVID19 Resource Directory













The McKean County COVID19 Resource Directory, is a collection of organizations that are providing critical services to the residence of McKean county during the COVID19 pandemic. The online component can be found at

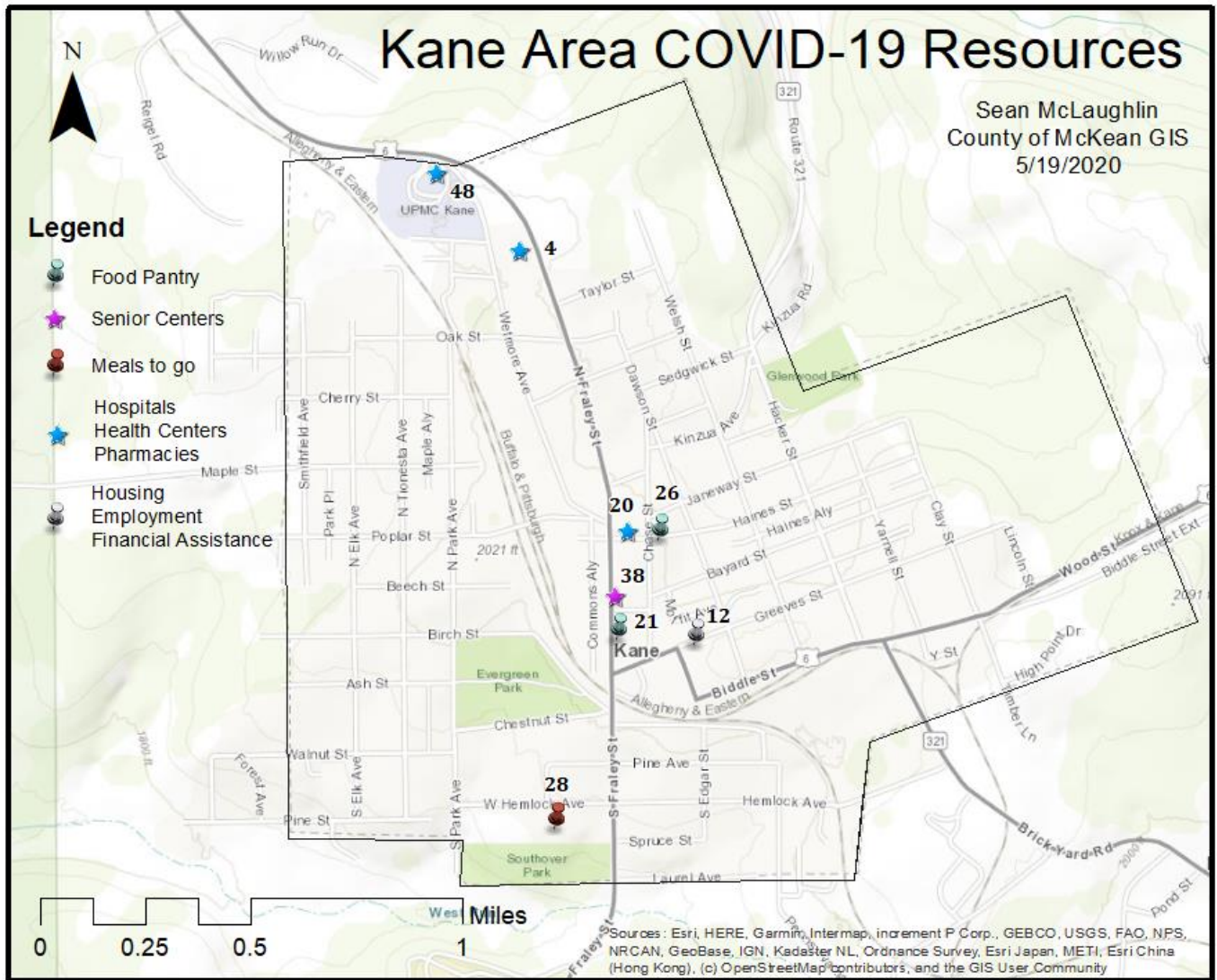
<https://mckeancounty.maps.arcgis.com/apps/View/index.html?appid=220c5d8825164179a3619c8231f25bf1> or on the county website at https://www.mckeancountypa.org/news_detail_T6_R1.php

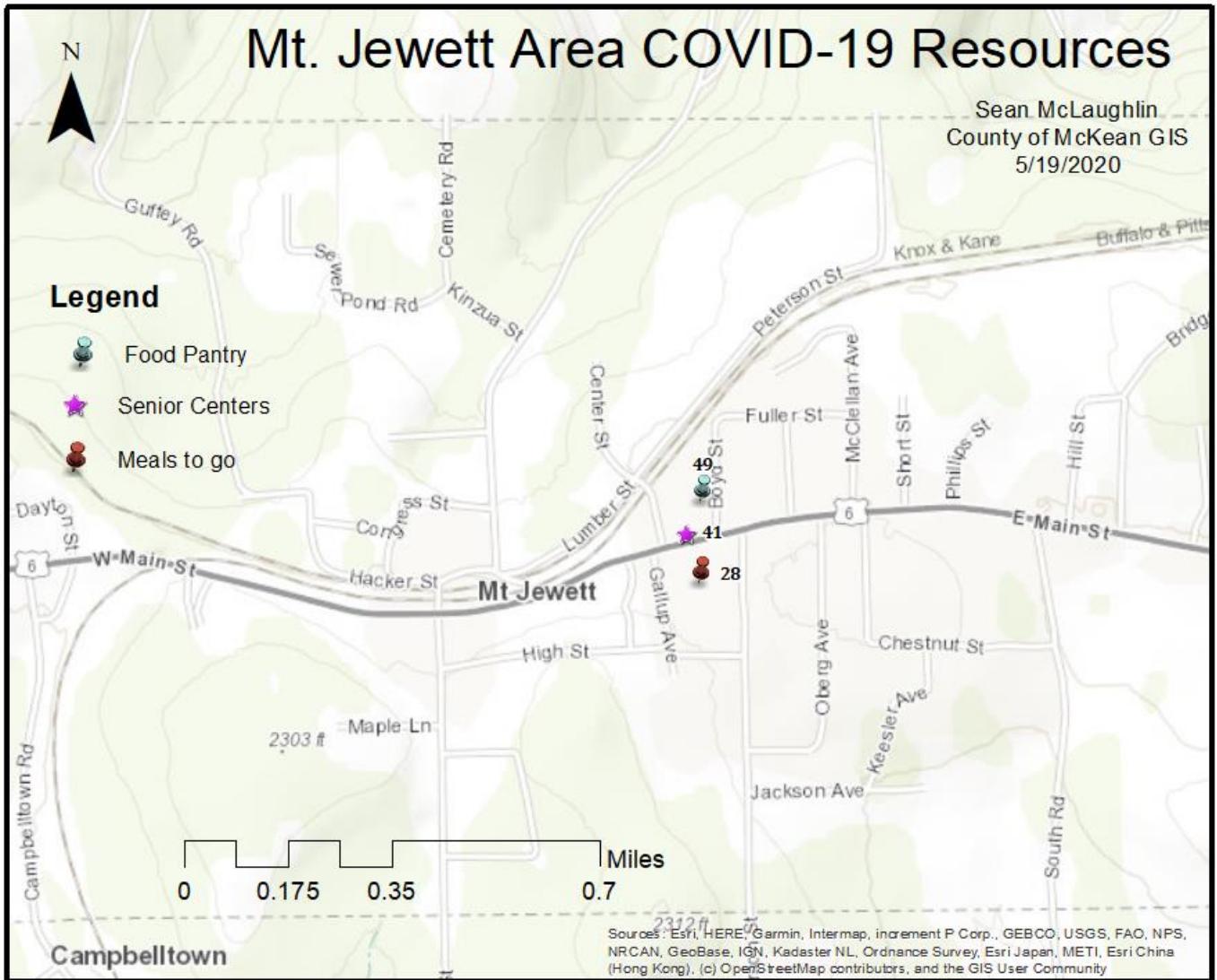
Below are community maps that show the resources available in certain areas. Similarly, a table of all resources accompany the maps below. Numbers next to the resources in the maps refer to the organization listed in the table. It is important to note that not all resources are located within community centers. There are resources in other areas that are not portrayed in the maps below. Please refer to the tables and online components for the complete list. Lastly, I've included a legend in which all resources are symbolized by.

Resource Directory Legend:

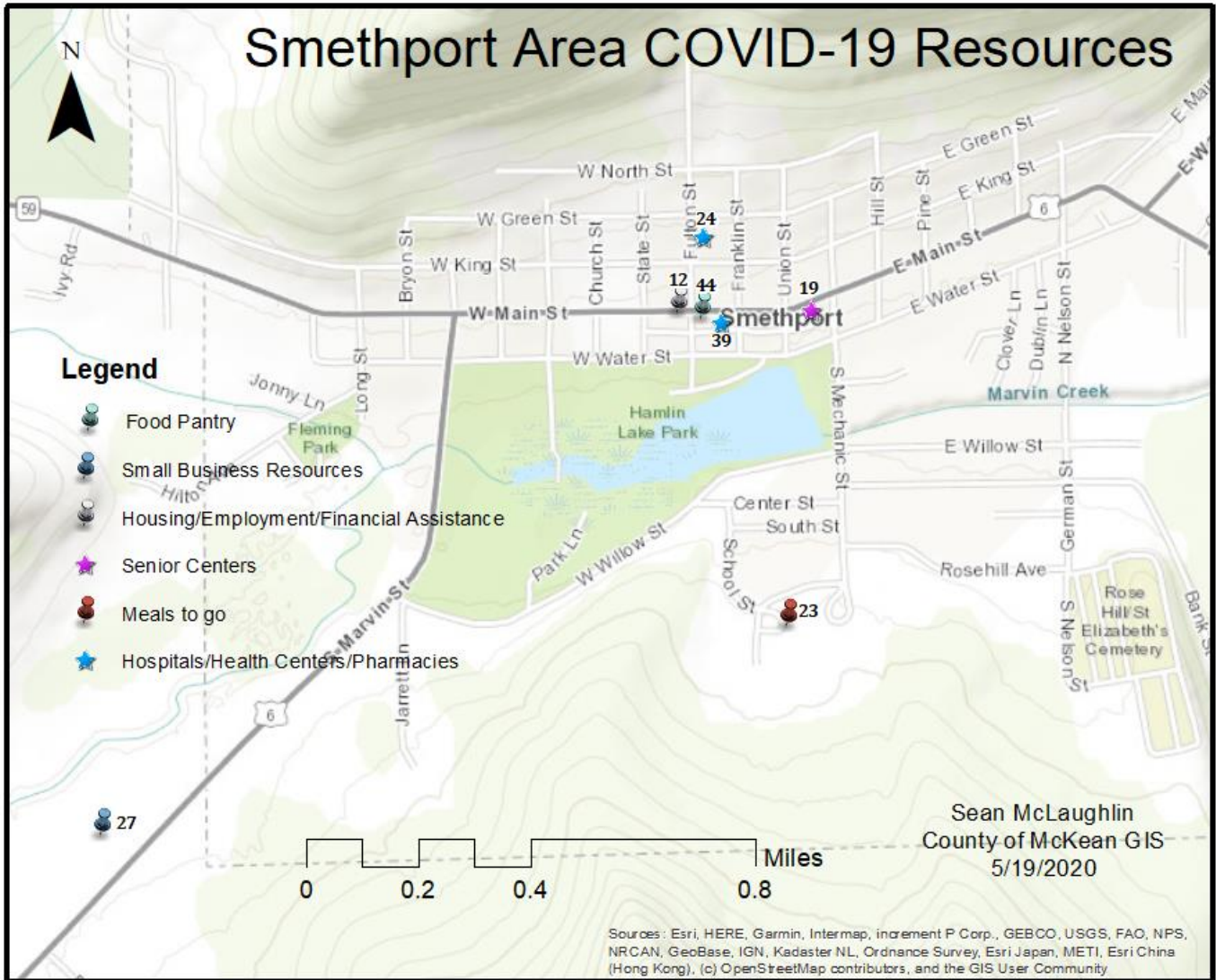
Legend

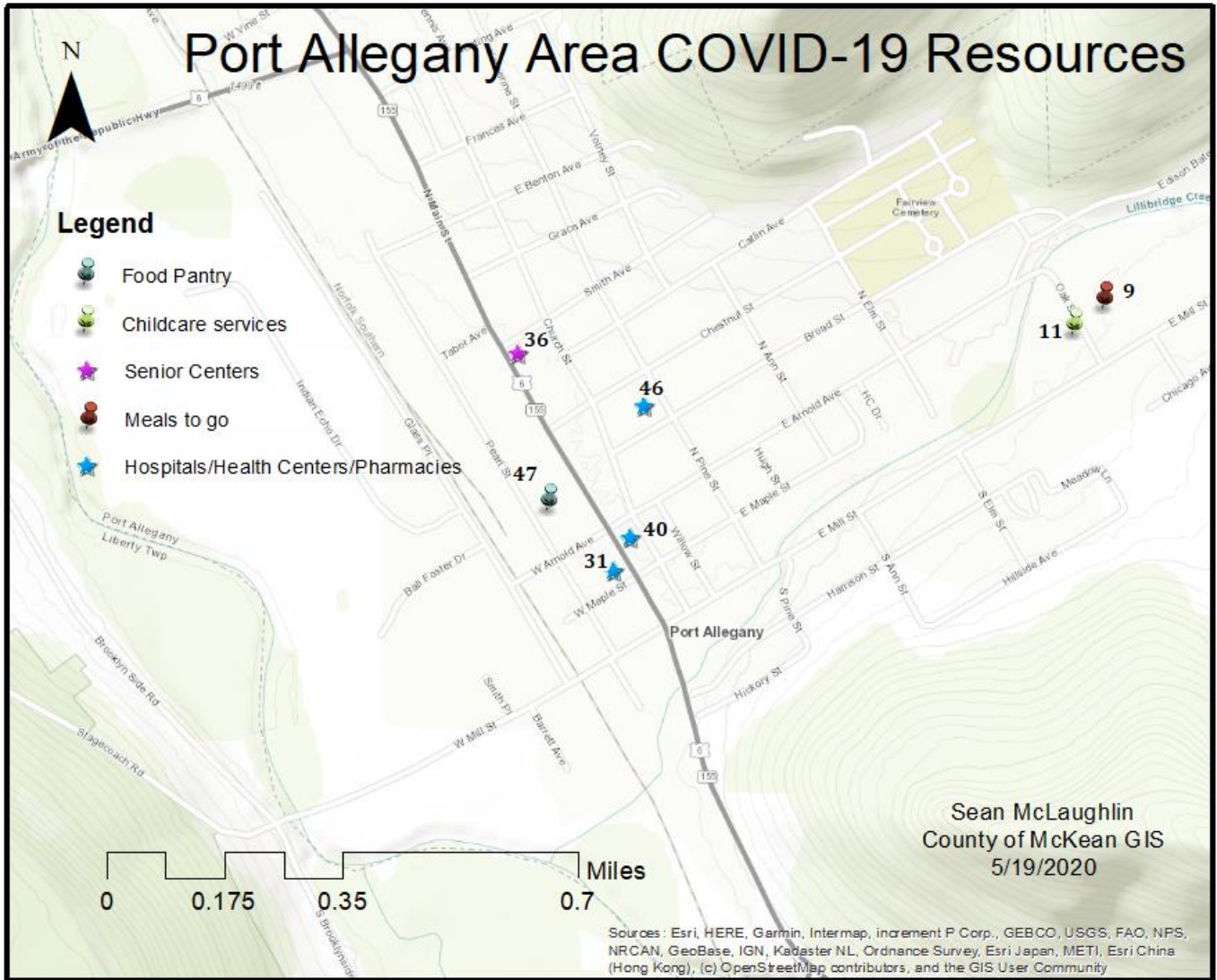
-  Food Pantry
-  Childcare services
-  Maternity Closet
-  Meals Delivered
-  Small Business Resources
-  Housing/Employment/Financial Assistance
-  Senior Centers
-  Meals to go
-  Hospitals/Health Centers/Pharmacies
-  Mental Health Services
-  Community Outreach/Miscellaneous
-  Domestic Violence/Sexual Assault Services

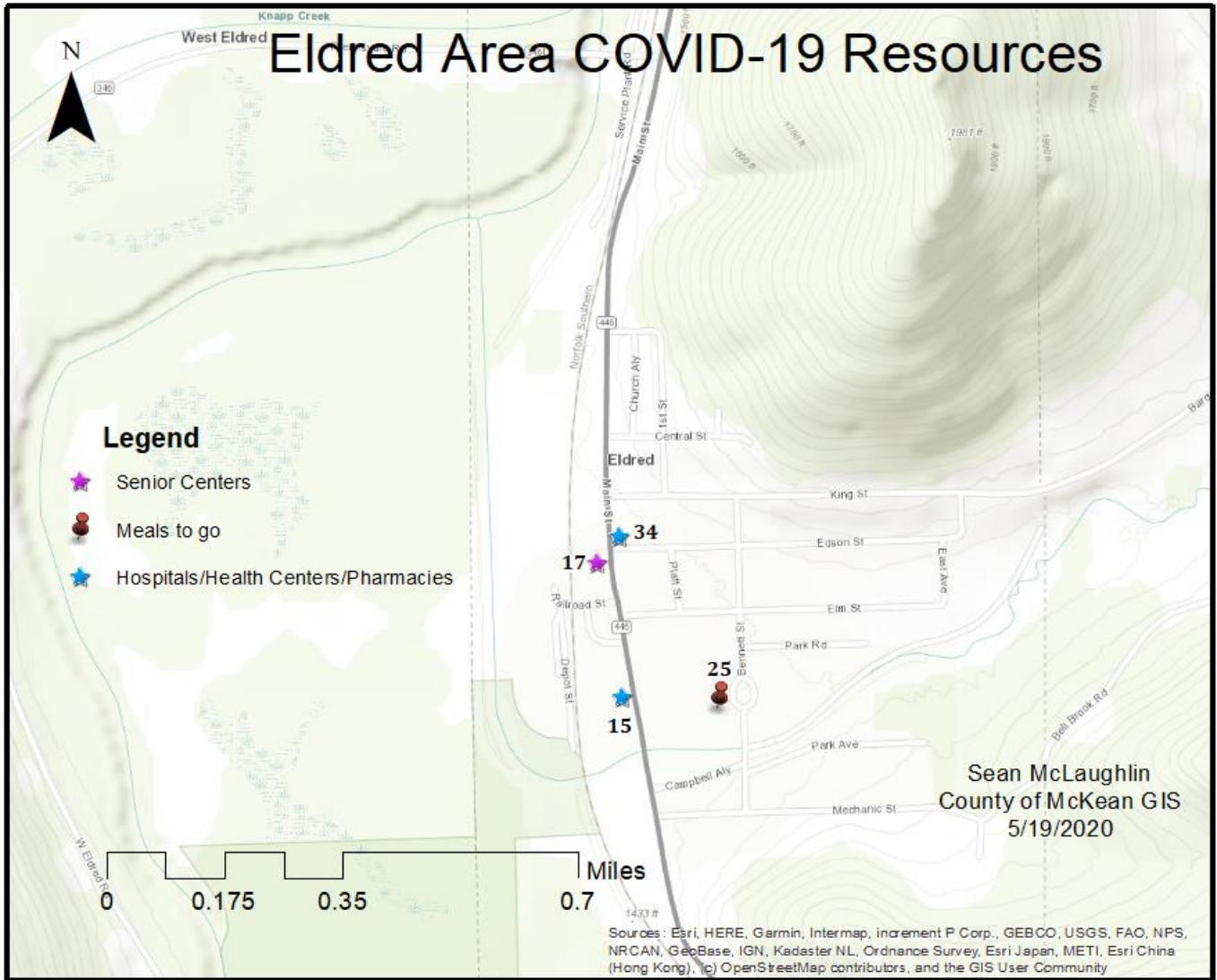


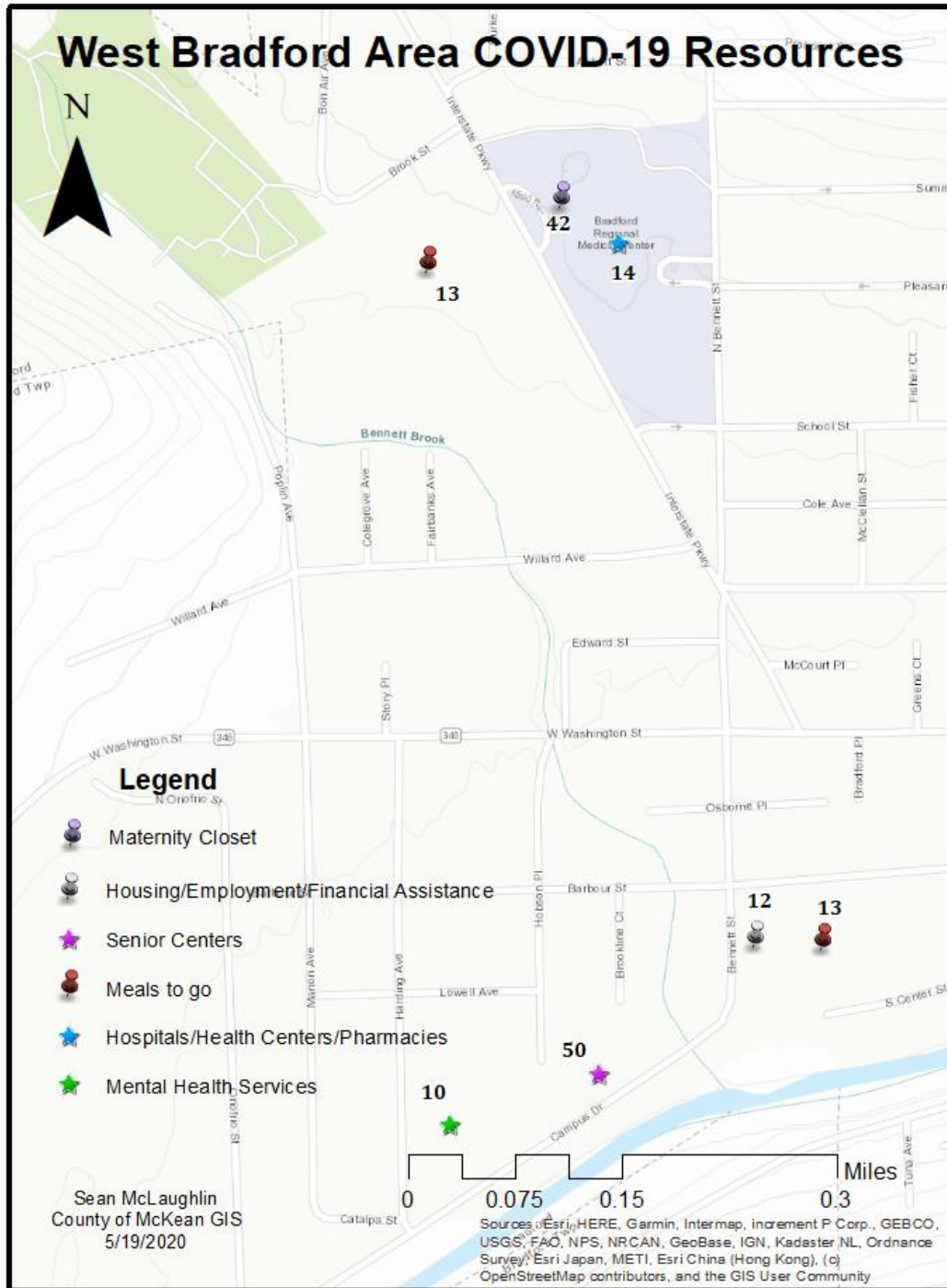


Smethport Area

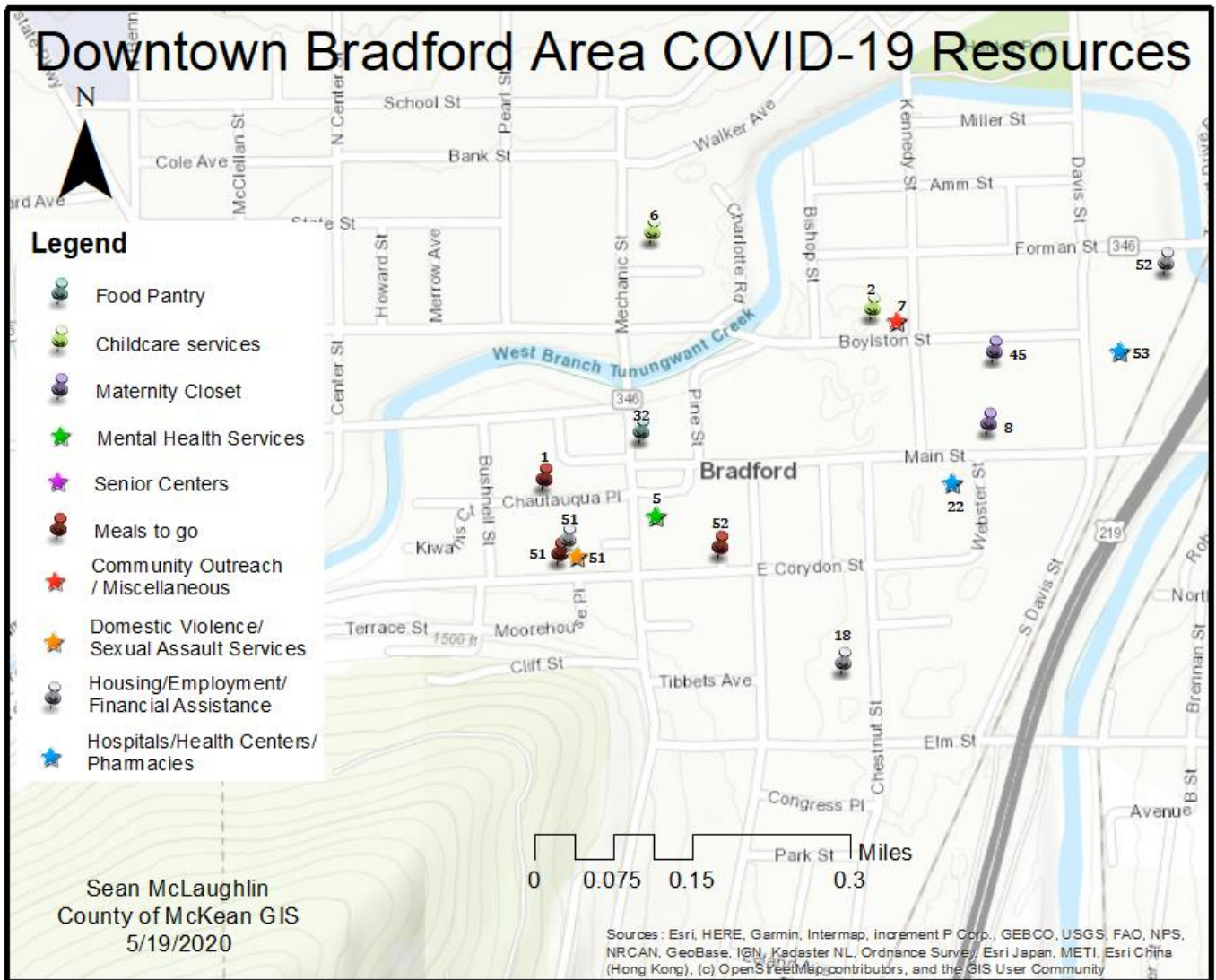


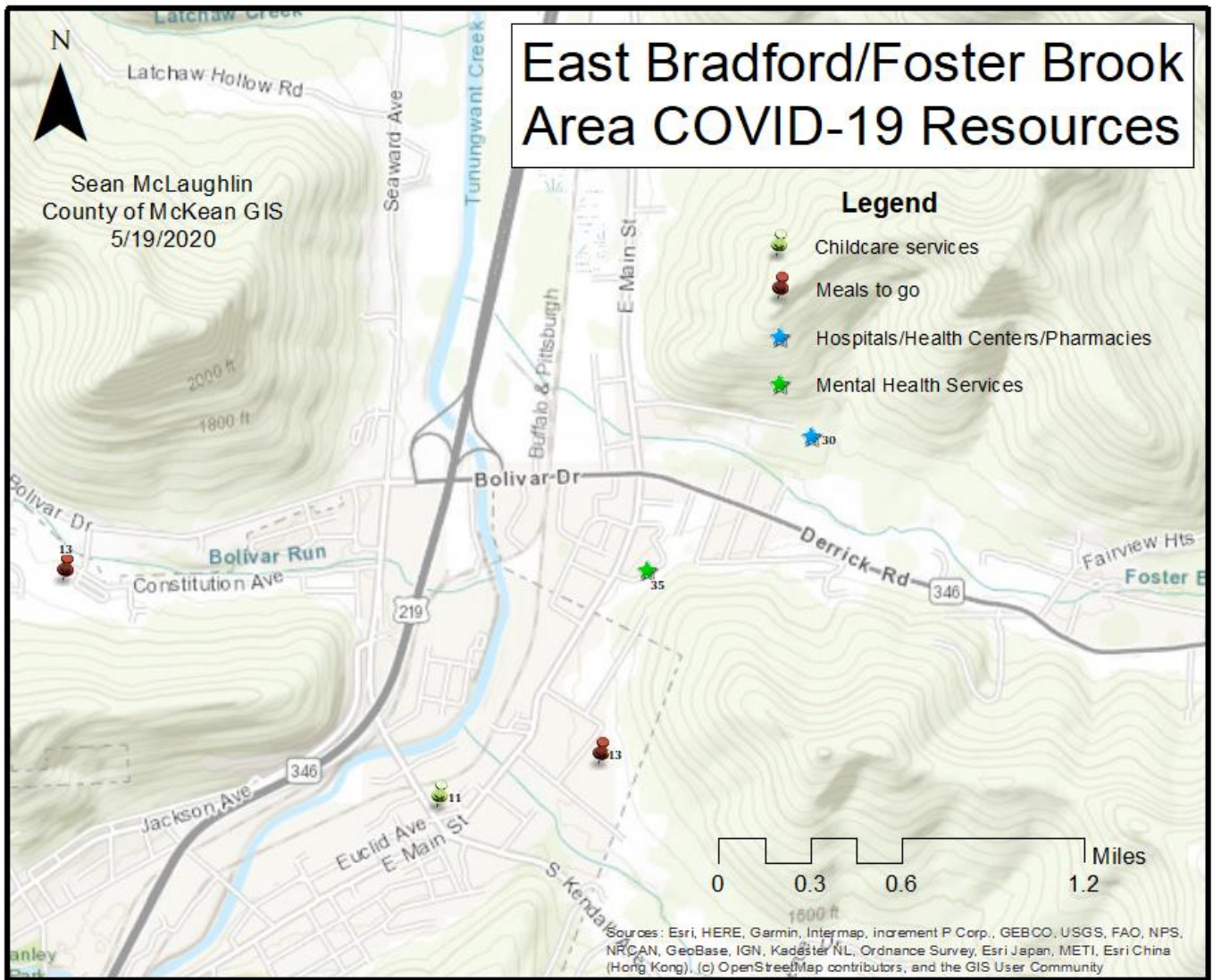


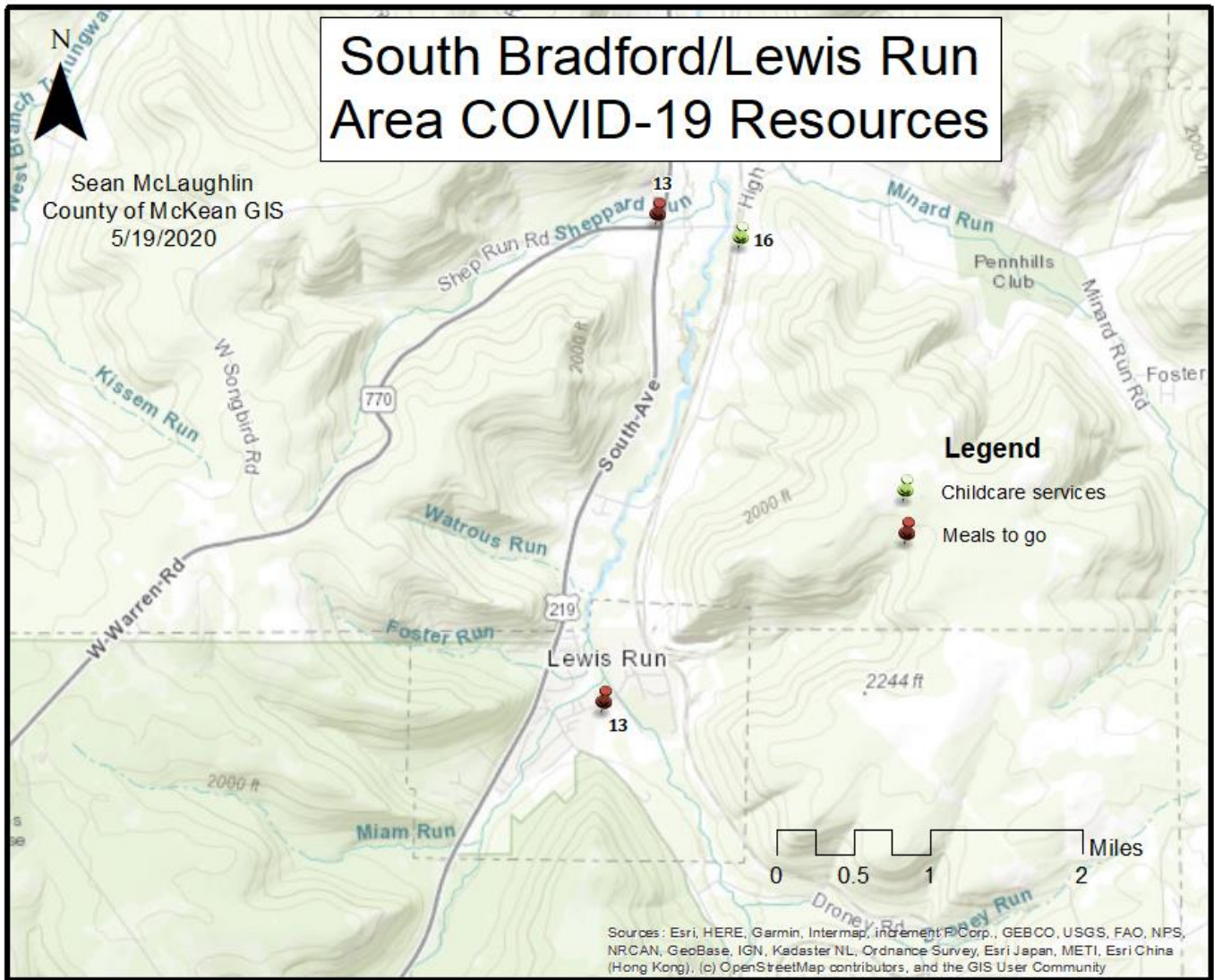




Downtown Bradford







Organization Code	Organization	Eligibility	Services Rendered	Number
1	Church of the Ascension	No restrictions	Meals to go	814-368-8915
2	YMCA Childcare & Learning Center	Essential Employees & their children	Childcare services	814-368-6101 x 250
3	JIT Food Pantry	Otto Township Residents	Meals Delivered	814-873-9422
4	Rite Aide - Kane		Hospitals/ Health Centers / Pharmacies	814-837-6160
5	Alcohol & Drug Abuse Services		Mental Health Services	1-844-621-4080
6	ABC Grow with me Childcare	Only life sustaining employees & their children	Childcare services	814-598-0124
7	YMCA Shepherding Program		Community Outreach/Miscellaneous	814-368-6101
8	Catholic Charities Counseling & Adoption Services	PA Resident with a child under the age of 1	Maternity Closet	814-368-8644 x 204
9	Port Allegany School District	PASD Students	Meals to go	
9	Port Allegany School District	PASD Students	Meals to go	
10	the Guidance Center		Mental Health Services	814-362-6353
11	Learn, Love, Laugh Childcare Center - Bradford	Essential Employees & their children	Childcare services	814-331-4880
11	Learn, Love, Laugh Childcare Center -Port Allegany	Essential Employees & their children	Childcare services	814-642-2070
12	McKean County Redevelopment & Housing Authority	Low to moderate income persons/homeless persons	Housing/ Employment/ Financial Assistance	814-887-5563
12	McKean County Redevelopment & Housing Authority	Low to moderate income persons/homeless persons	Housing/ Employment/ Financial Assistance	814-887-5563
12	McKean County Redevelopment & Housing Authority	Low to moderate income persons/homeless persons	Housing/ Employment/ Financial Assistance	814-887-5563
13	Bradford Area School District	BASD Students	Meals to go	
13	Bradford Area School District	BASD Students	Meals to go	
13	Bradford Area School District	BASD Students	Meals to go	
13	Bradford Area School District	BASD Students	Meals to go	
13	Bradford Area School	BASD Students	Meals to go	

	District			
13	Bradford Area School District	BASD Students	Meals to go	
13	Bradford Area School District	BASD Students	Meals to go	
13	Bradford Area School District	BASD Students	Meals to go	
13	Bradford Area School District	BASD Students	Meals to go	
13	Bradford Area School District	BASD Students	Meals to go	
13	Bradford Area School District	BASD Students	Meals to go	
14	Bradford Regional Medical Center		Hospitals/ Health Centers / Pharmacies	814-368-4143
15	Eldred Health Center		Hospitals/ Health Centers / Pharmacies	814-225-4241
16	Grandma Rose's Day Care	Essential Employees & their children	Childcare services	814-558-3393
17	Eldred Senior Center		Senior Centers	814-225-4752
18	McKean County Assistance Office	moderate to low income PA Residents	Housing/ Employment/ Financial Assistance	814-362-4671
19	Smethport Senior Center		Senior Centers	814-887-5630
20	SMP Pharmacy		Hospitals/ Health Centers / Pharmacies	814-837-8500
21	Kane Area Community Center	McKean Residents	Food Pantry	814-837-9472
22	Ott & McHenry Pharmacy - Bradford		Hospitals/ Health Centers / Pharmacies	814-362-3827
23	Smethport Area School District	SASD Students	Meals to go	814-450-5143
23	Smethport Area School District	SASD Students	Meals to go	814-450-5143
23	Smethport Area School District	SASD Students	Meals to go	814-450-5143
23	Smethport Area School District	SASD Students	Meals to go	814-450-5143
23	Smethport Area School District	SASD Students	Meals to go	814-450-5143
24	Smethport Health Center		Hospitals/ Health Centers / Pharmacies	814-887-5655
25	Otto Eldred School District	OESD Students	Meals to go	814-817-1391
25	Otto Eldred School District	OESD Students	Meals to go	814-817-1391
26	Kane Area Food Pantry	Kane Area School District Residents	Food Pantry	814-598-6162
27	McKean County Economic Development		Small Business Resources	814-887-3107
28	Kane Area School District	KASD Students	Meals to go	814-837-9570

28	Kane Area School District	KASD Students	Meals to go	814-837-9570
28	Kane Area School District	KASD Students	Meals to go	814-837-9570
28	Kane Area School District	KASD Students	Meals to go	814-837-9570
30	Walmart Pharmacy - Bradford		Hospitals/ Health Centers / Pharmacies	814-368-4700
31	Rite Aid - Port Allegany		Hospitals/ Health Centers / Pharmacies	814-642-5021
32	Destinations Christian Community Outreach Center	Bradford Residents	Food Pantry	814-331-4551
33	Gathered from the Grove	McKean Residents	Food Pantry	610-587-5876
34	Buchanan Brothers Pharmacy - Eldred		Hospitals/ Health Centers / Pharmacies	814-225-4723
35	Beacon Light Behavioral Health		Mental Health Services	1-800-345-1780
36	Port Allegany Senior Center		Senior Centers	814-642-2101
37	Weakland's Wee Care	Essential Employees & their children	Childcare services	814-642-7857
38	Kane Area Senior Center		Senior Centers	814-837-6981
39	Buchanan Brothers Pharmacy - Smethport		Hospitals/ Health Centers / Pharmacies	814-887-5375
40	Port Allegany Pharmacy		Hospitals/ Health Centers / Pharmacies	814-642-2871
41	Mount Jewett Senior Center		Senior Centers	814-778-5547
42	WIC	Income requirements	Maternity Closet	814-362-4346
43	Oswayo Valley School District	Children aged 18 and below & disabled adults 19+	Meals to go	jhamberger@oswayo.com
44	Christian Community Service -Smethport Food Pantry	McKean Residents	Food Pantry	814-887-9233 or 814-887-5123
45	Bright Alternatives		Maternity Closet	814-368-3388
46	Port Allegany Health Center		Hospitals/ Health Centers / Pharmacies	814-642-2505
47	Port Allegany Food Pantry	Port Allegany School District Residents	Food Pantry	
48	UPMC Kane Community Hospital		Hospitals/ Health Centers / Pharmacies	814-837-8585
49	Mt Jewett Food Bank	Mt Jewett Borough & Hamlin Township Residents	Food Pantry	814-778-5793
50	Bradford Senior Center		Senior Centers	814-368-4412 or 814-368-7890
51	YWCA	Bradford & Eldred Area Residents	Meals to go	814-368-4235 x 11

51	YWCA	McKean Residents	Housing/ Employment/ Financial Assistance	814-368-4235
51	YWCA	McKean Residents	Domestic Violence/Sexual Assault Services	814-362-4235
52	Careerlink		Housing/ Employment/ Financial Assistance	814-363-9100
52	Friendship Table	McKean Residents	Meals to go	
53	CVS Pharmacy - Bradford		Hospitals/ Health Centers / Pharmacies	814-362-4559